

SELF-PACED LESSONS

RSTrainer Introduction

*Course Pre-Test**

Establishing EtherNet/IP Connections to Remote Devices

- Configuring an EtherNet/IP Module in a Local Chassis
- Configuring an EtherNet/IP Module in a Remote Chassis
- Configuring a Digital I/O Module in a Chassis
- Configuring an Analog I/O Module in a Chassis
- Modifying EtherNet/IP Module Parameters
- Adding a Controller to an I/O Configuration

Sending Messages over an EtherNet/IP Network

- Producing and Consuming Data over an EtherNet/IP Network
- Communicating between Multiple Controllers on an EtherNet/IP Network Using a Message Instruction

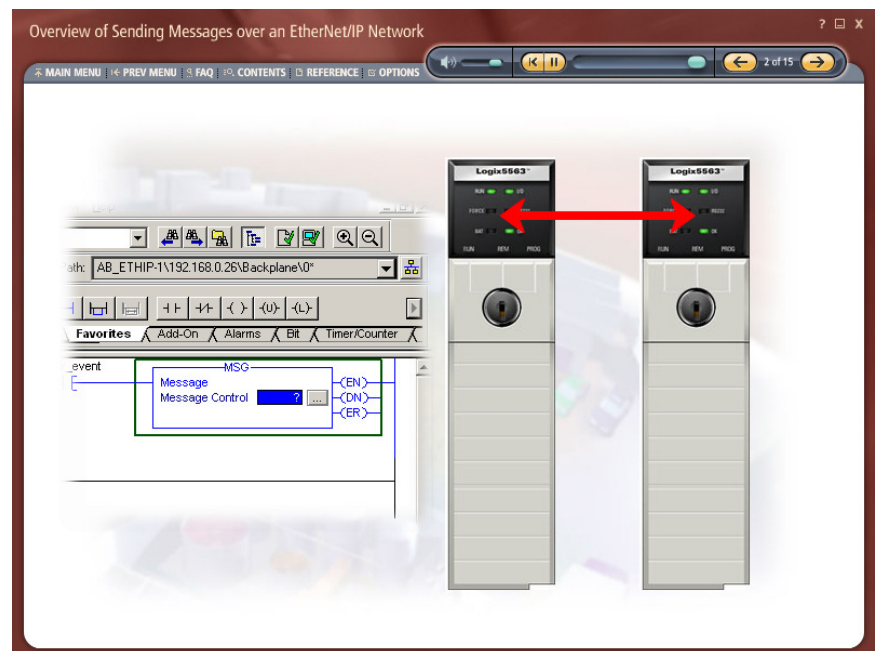
EtherNet/IP Network Diagnostics

- Configuring the 9300-8EDM Ethernet Diagnostic Module
- Obtaining the IP Address of a Computer
- Accessing Diagnostic Information Using a Web Browser

*Course Post-Test**

* This course must be used with *RSTrainer Enterprise Edition Student Manager* to complete the course pre- and post-tests.

RSTrainer® for EtherNet/IP – Communications and Diagnostics e-Learning Courses



Course Purpose

This interactive, self-paced training course explains the concepts of Ethernet Industrial Protocol (EtherNet/IP) communications and diagnostics. During the course, you will learn how to establish EtherNet/IP connections, send messages, and perform basic networking diagnostics.

Helpful animations, background information, answers to frequently asked questions, and links to other reference materials provide you with a variety of knowledge and learning tools. These tools will provide you with the knowledge required to establish EtherNet/IP connections to remote devices, send messages over an EtherNet/IP network via produced and consumed tags and a message instruction, and configure the 9300-8EDM Ethernet diagnostic module.

You will also be given multiple opportunities to test your knowledge through question and answer sessions. These question and answer sessions will allow you to gauge your knowledge level and help you identify areas for improvement.

Intended Audience

These e-learning courses are intended for the following audiences:

- Individuals who prefer self-paced instruction
- Individuals who cannot attend classroom training
- Individuals who are responsible for setting up communications over an EtherNet/IP network
- Individuals interested in understanding how to send messages over an EtherNet/IP network, and perform basic networking diagnostics

Prerequisites

To successfully complete this course, you should be able to perform basic Microsoft® Windows® tasks.

Web-Based or Computer-Based Training

Choose the training delivery method that best suits your needs:

- RA University Online web-based training is stored on a server and accessed across a network via the Internet. Web-based training permits unlimited usage for a single, licensed user.
- The RSTrainer computer-based CD-ROM format permits unlimited usage on a single, licensed computer. Computer-based training does not require an Internet connection; therefore, learning can take place anytime and anywhere a computer is available.

Learning Activities & Features

Rockwell Automation e-learning courses include the following features:

- Pre- and post-testing (when used in conjunction with *RSTrainer Enterprise Edition Student Manager*)
- Information overviews
- Discussions of basic principles and/or concepts
- Descriptive and detailed technical explanations
- Animated sequences and interactive simulations
- Interactive and integrated practice exercises
- Online help
- Index to locate specific course topics
- Embedded Adobe® Acrobat® PDF files of User Manuals and Installation Guides
- Links to useful reference material
- Glossary of terms

In addition, the RA University Online web-based training courses offer the following unique features:

- Embedded learning management system
- Administrative features

To Purchase

To register for this or any other Rockwell Automation training course, contact your local authorized Allen-Bradley Distributor or your local Sales/Support office.

You can also access course information via the Web at <http://www.rockwellautomation.com/training>

Catalog Numbers

- *RSTrainer for EtherNet/IP – Communications and Diagnostics*: **9393-RSTENET2ENE**
- *RSTrainer Enterprise Edition for EtherNet/IP – Communications and Diagnostics*: **9393-RSTENET2ENF**
- Web-based *EtherNet/IP – Communications and Diagnostics* ePass: **WBT1PACK** (equivalent to 1 course)

www.rockwellautomation.com

Power, Control and Information Solutions

Americas: Rockwell Automation, 1201 South Second Street, Milwaukee, WI 53204-2496 USA, Tel: (1) 414.382.2000, Fax: (1) 414.382.4444

Europe/Middle East/Africa: Rockwell Automation SA/NV, Vorstlaan/Boulevard du Souverain 36, 1170 Brussels, Belgium, Tel: (32) 2 663 0600, Fax: (32) 2 663 0640

Asia Pacific: Rockwell Automation, Level 14, Core F, Cyberport 3, 100 Cyberport Road, Hong Kong, Tel: (852) 2887 4788, Fax: (852) 2508 1846